

TERALEC

SINGLE PHASE SOFT STARTERS

SS RANGE



Benefits of TERALEC **SS** range soft starters

Reduced Starting Current: A single-phase soft starter can limit the inrush current during starting, reducing the mechanical and electrical stress on the motor and connected equipment. This can increase the lifespan of the motor and reduce the risk of electrical faults.

Smooth Starting: A single-phase soft starter can provide smooth starting of the motor, eliminating the sudden jolts and mechanical stress associated with direct-on-line starting. This can help to reduce wear and tear on the motor and connected equipment.

Energy Savings: By reducing the inrush current during starting, a single-phase soft starter can help to lower the peak demand for electricity, resulting in lower energy costs. Additionally, the smooth starting and stopping can help to reduce energy consumption by eliminating the need for frequent starts and stops.

Improved Control: A single-phase soft starter can provide improved control over the starting of the motor, allowing for precise adjustments to the acceleration rates. This can help to optimize the motor's performance and reduce the risk of overloading or overheating.

Compact Size: Single-phase soft starters are generally smaller and more compact than direct-on-line starters, making them ideal for applications where space is limited.

Improved Performance: When using an inverter or generator to power a water pump or electric motor, there can be issues with voltage spikes and frequency fluctuations that can cause the motor to overheat or even fail. Our single-phase soft starter can help to mitigate these issues by providing a smooth and controlled starting sequence.

Reduced Maintenance Costs: By reducing the stress on the motor and connected equipment, the TERALEC SS range of single-phase soft starters can help to reduce maintenance costs and downtime, particularly when operating in remote or harsh environments.

Improved Efficiency: By limiting the inrush current and providing precise control over the starting and stopping sequence, a single-phase soft starter can help to improve the overall efficiency of the motor and connected equipment. This can result in lower energy costs and reduced wear and tear on the equipment.

Compatibility: Single-phase soft starters are designed to work with a wide range of inverters and generators, making them ideal for applications where the power source may vary or where multiple motors need to be controlled in a coordinated fashion.

TERALEC **SS** range features.

TERALEC SS range of single-phase soft starters come in a variety of kW ratings with a range of features.

SS12 Soft Starter: TERALEC **SS12** soft starters has an adjustable acceleration time of 1 second to 40 seconds.

SS12 Soft start with speed control: TERALEC **SS12** soft starter with speed control have a fixed acceleration time of 4 seconds. The motor speed can be set using the internal potentiometer.

SS15 Soft Starter: TERALEC **SS15** soft starters has an adjustable acceleration time of 1 second to 40 seconds. Ramp time can be set by using the internal potentiometer.

SS15 Soft start with speed control: TERALEC **SS15** soft starters has a fixed acceleration time of 4 seconds. The motor speed can be set using the internal potentiometer.

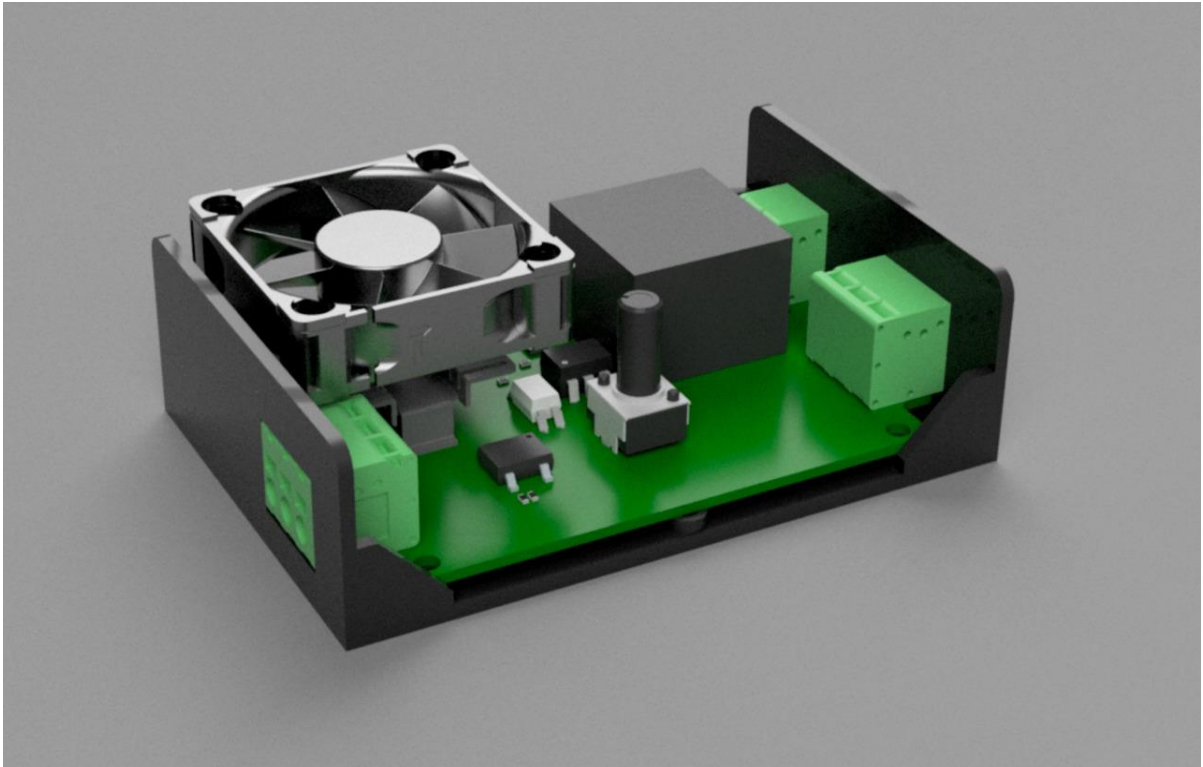
SS25 Soft Starter: TERALEC **SS25** soft starters has an adjustable acceleration time of 1 second to 40 seconds. Ramp time can be set by using the potentiometer on the front panel.

SS25 Soft start with external speed control: TERALEC **SS25** soft starters has a fixed acceleration time of 4 seconds. The motor speed can be set using the potentiometer on the front panel.

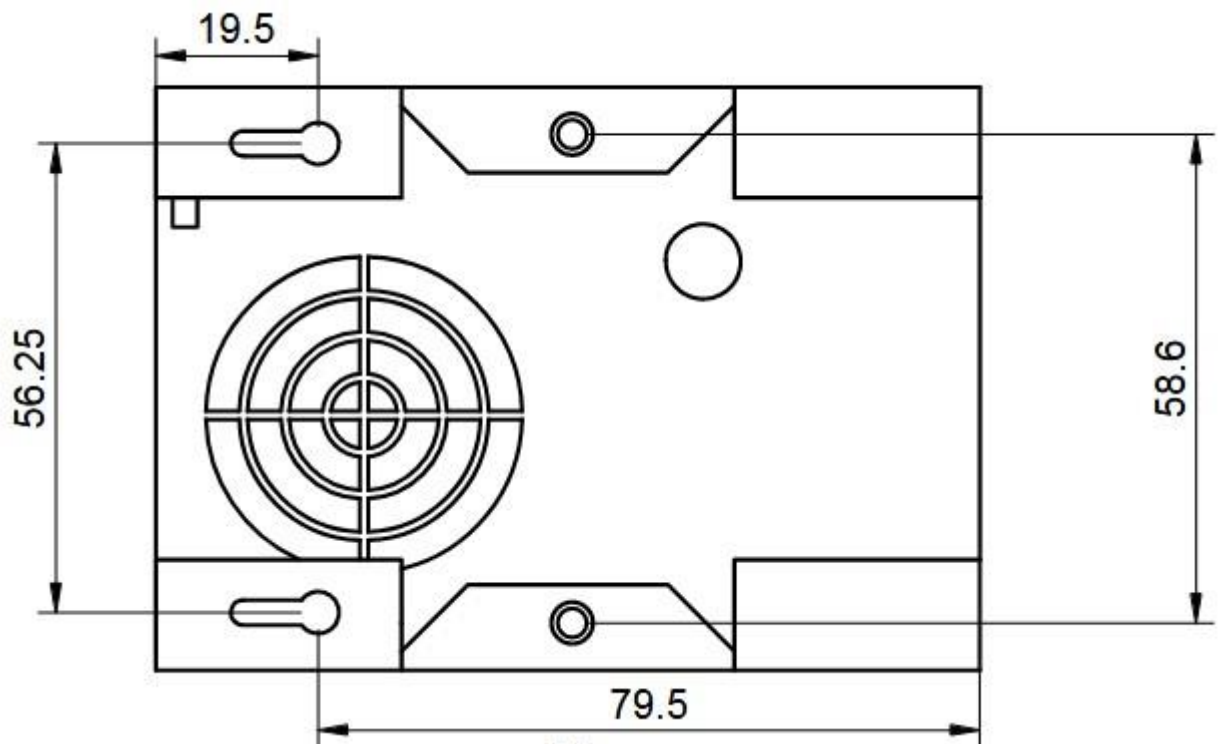
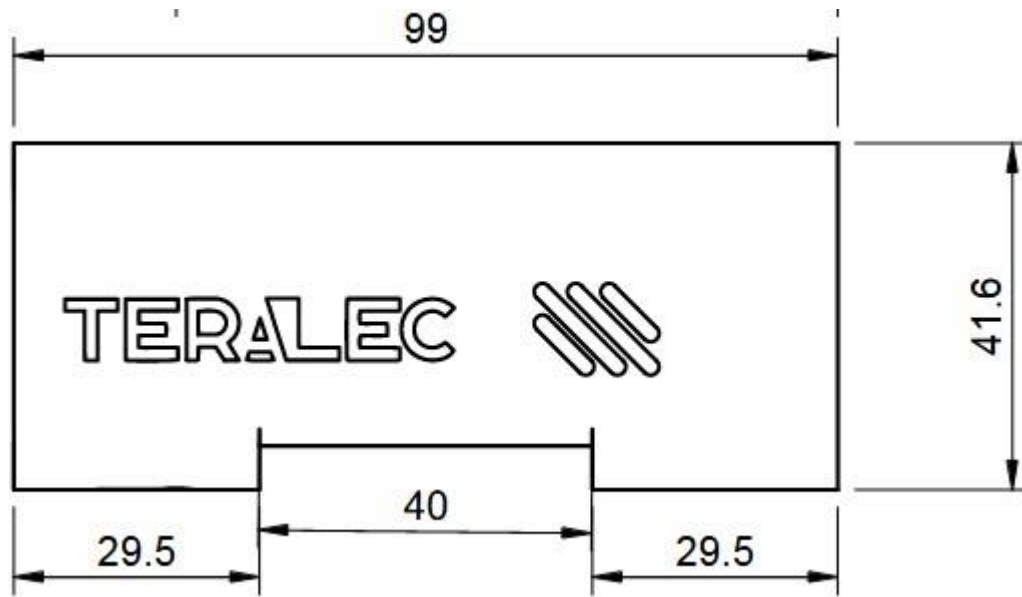
SS25 Soft start with external speed control: TERALEC **SS25** soft starters has a fixed acceleration time of 4 seconds. The motor speed can be set using the potentiometer on the front panel.

TERALEC **SS25**

The TERALEC **SS25** is equipped with an internal fan, external start connection and high speed zero crossing control to ensure a smooth ramp up of single phase motors.



TERALEC SS Range dimensional data



TERALEC SS Range technical data

MODEL SS12 SPEED CONTROL		
SPEC DESCRIPTION	MIN	MAX
POWER RATING		2.5kW
VOLTAGE RANGE	100 VAC	277 VAC
SPEED CONTROL VOLTAGE	70	MAINS SUPPLY VOLTAGE
AMPERAGE ON 1.2kW		60AIn – 5s
MODEL SS12 SOFT STARTER		
SPEC DESCRIPTION	MIN	MAX
POWER RATING		2.5kW
VOLTAGE RANGE	100 VAC	277 VAC
RAMP TIME ADJUSTABLE	1s	40s
AMPERAGE ON 1.2kW		60AIn – 5s
MODEL SS15 SPEED CONTROL		
SPEC DESCRIPTION	MIN	MAX
POWER RATING		1.5kW
VOLTAGE RANGE	100 VAC	277 VAC
SPEED CONTROL VOLTAGE	70VAC	MAINS SUPPLY VOLTAGE
AMPERAGE ON 1.5kW		80AIn – 5s
MODEL SS15 SOFT STARTER		
SPEC DESCRIPTION	MIN	MAX
POWER RATING		1.5kW
VOLTAGE RANGE	100 VAC	277 VAC
RAMP TIME ADJUSTABLE	1s	40s
AMPERAGE ON 1.5kW		80AIn – 5s
MODEL SS25 SPEED CONTROL		
SPEC DESCRIPTION	MIN	MAX
POWER RATING		2.5kW
VOLTAGE RANGE	100 VAC	277 VAC
SPEED CONTROL VOLTAGE	70VAC	MAINS SUPPLY VOLTAGE
AMPERAGE ON 2.5kW		150AIn – 5s
MODEL SS25 SOFT STARTER		
SPEC DESCRIPTION	MIN	MAX
POWER RATING		2.5kW
VOLTAGE RANGE	100 VAC	277 VAC
RAMP TIME ADJUSTABLE	1s	40s
AMPERAGE ON 2.5kW		150AIn – 5s

